



Lidcombe, NSW

52A Joseph Street

Leaders ESTATE AGENTS

Superb Location + Very Flexible Terms Available!

Located only a mere 5 min walk to the station, surrounded by many successful restaurants, cafes and other established businesses, this free-standing retail premises offers a large internal area (130sqm approx.) with 4 x car spaces at the rear of the property.

- * Site area 221.5m2
- * Internal area of 130sqm approx.
- * Rear Lane Access with 4 x car spaces
- * Less than a 5 min walk to Lidcombe Train Station

Most suitable for cafe, restaurant, or BBQ restaurant business

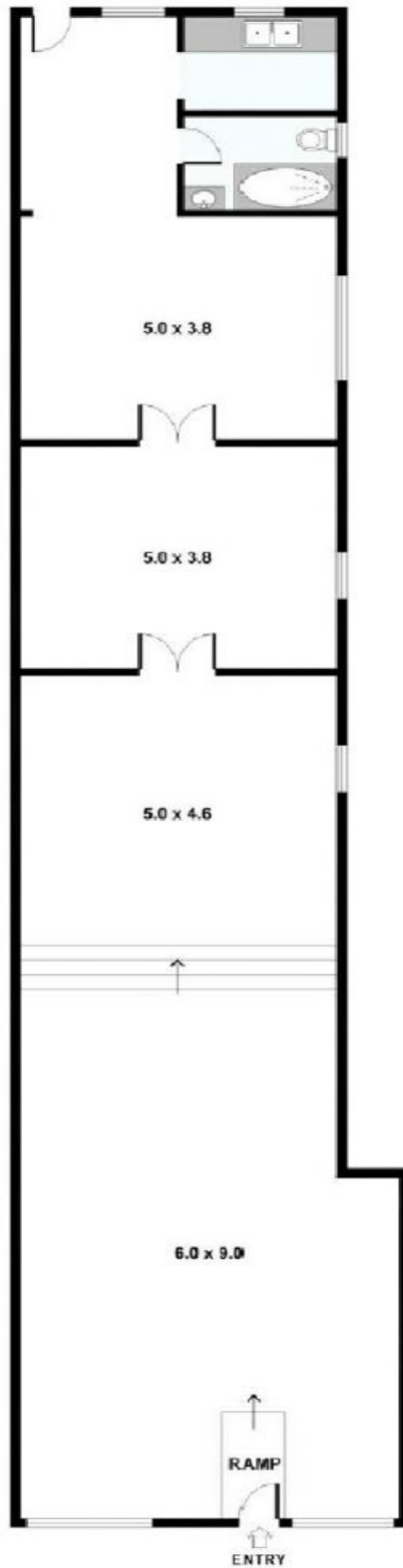
The lease terms and conditions can be very flexible and everything is negotiable for the right business owner.

\$1,800 per week ONO

Contact: Leon Chan
0404 881 309

Type: Retail
Land: 222m2

<http://www.leadersestateagents.com>



52A Joseph St, Lidcombe

Plans shown are only indicative of layout. Dimensions are approximate.

Lidcombe, NSW
52A Joseph Street